

ANNUAL REPORT

making the difference
in the community
2010-2011



Child Focus, Inc.
Making THE Difference!
www.child-focus.org

to our community

In a year of unprecedented challenges,
Child Focus, Inc. continues to provide
quality services to children and
families in our communities.

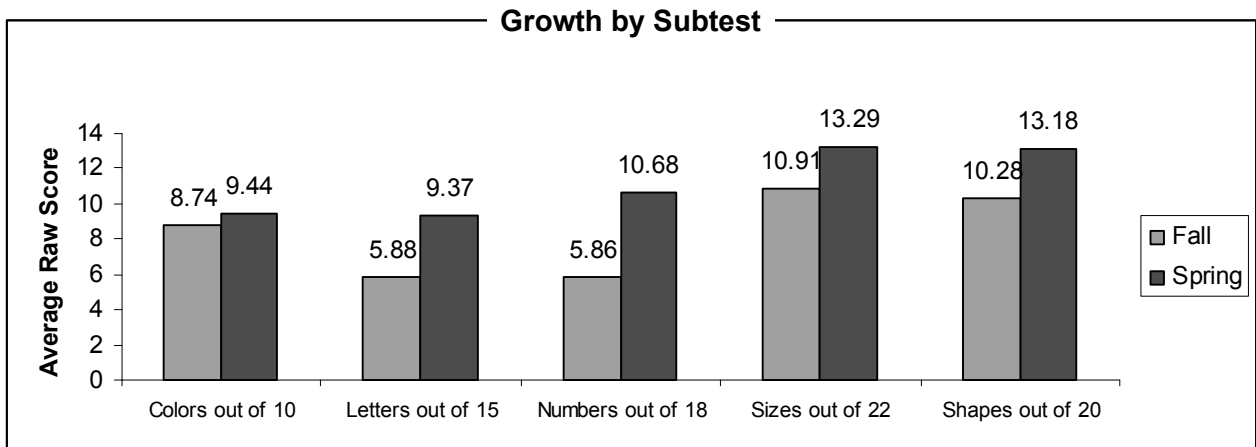


Child Focus, Inc. Directors

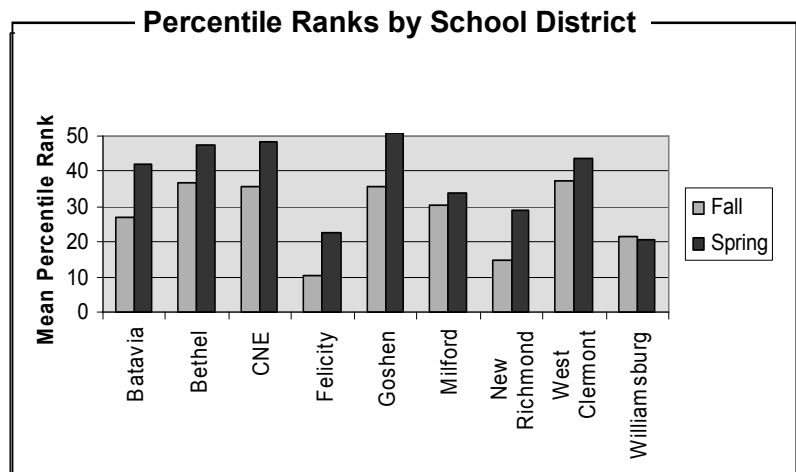
Front Row (from left): Pamela Lindeman, Jeff Finke, Jim Carter and Lorre Arnold.
Second Row: Melanie Recchia, Laura Stith, Tara Keith, Susan Graham, Sandy Lock,
Desiree Marler and Berta Velilla.

improving school readiness

Studies indicate that children living in poverty can enter Kindergarten scoring up to 60% below their peers. As “the child’s first teachers” parents are important in fostering school readiness. Establishing strong partnerships with families and communicating effectively with parents about their child’s education is a fundamental goal for Early Learning programs. Child Focus, Inc. family engagement efforts include the involvement of parents in planning and organizing family events, overseeing program operations and assisting with program planning efforts. Our goal is to engage families in the program and the community to help them find support, learning opportunities and friendship. Child Focus, Inc. Early Learning programs are primarily funded through the federal Office of Head Start within the Administration for Children and Families, the Ohio Department of Health and the Ohio Department of Job and Family Services.



By the end of the school year, Head Start children scored higher than 42% of the normative sample, meaning Head Start children scored better than children who do not live in poverty or have other risk factors.



supporting healthy children

Ongoing preventative medical care can facilitate the identification and early treatment of health concerns that can impact a child's ability to learn. Proper nutrition, healthy eating habits and exercise are also important to school readiness.

Health screenings allow Head Start parents and staff to identify health issues that may interfere with learning and require follow up treatment. In 2010, a total 80 Head Start and Early Head Start children were identified as needing follow up medical treatment: 39 children were identified with chronic vision problems, of which 24 children needed eyeglasses. An additional 10 children were identified with chronic hearing deficits requiring tubes and an amplification device.

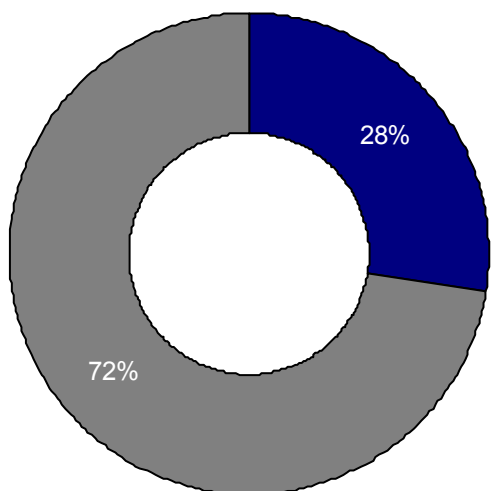
	PROGRAM		REGION	
	HS	EHS	HS	EHS
Percentage (%) of children with up-to-date immunizations	107%	99%	101%	94%
Percentage (%) of children with medical home (at end of enrollment)	100%	100%	N/A	N/A
Percentage (%) of children completing professional medical exam	96%	94%	N/A	N/A
Percentage (%) of children with dental home (at end of enrollment)	96%	100%	87%	N/A
Percentage (%) of children completing professional dental exams	93%	83%	89%	58%
Percentage (%) of children needing professional dental treatment	31%	N/A	20%	N/A
Percentage (%) of children receiving dental treatment	61%	N/A	75%	N/A

Sixty-nine children with special needs participated in Head Start and Early Head Start in 2010. Our staff in collaboration with specialized intervention specialists and therapists worked together to create an inclusive environment for children with disabilities with speech impediments and emotional/behavioral disorders.

	Head Start		Early Head Start	
	Total	Percentage	Total	Percentage
Children with an IEP or IFSP	45	8 %	24	12 %
Children with and IEP- determined eligible prior to enrollment	21	46 %	17	71 %
Children with IEP- determined eligible during enrollment	24	53 %	7	29 %
Children with IEP- not receiving services	0	0%	0	0%

engaging families and community

In 2010, 1,060 volunteers generated 25,266 hours of time to partner with Child Focus, Inc. to deliver high quality early learning experiences for young children. Families participated in home-based and center-based Head Start and Early Head Start services and supported the program as volunteers, advocates and Policy Council members.



2010 in-kind donations and volunteer hours (\$1,204,812)

\$872,229 in-kind donations value

\$332,583 volunteer hours value

Child Focus, Inc. staff worked to support families in reaching individual and family goals including education, housing assistance, job training and employment. In 2010, **92%** of Head Start and **82%** of Early Head Start families received at least one family service while in program.

Family Services

	HS	EHS
Emergency/Crisis Intervention	122	39
Housing Assistance	83	26
Mental Health Services	70	37
English as a Second Language (ESL) training	12	2
Adult Education	69	33
Job Training	41	12
Substance Abuse Prevention or Treatment	39	14
Child Abuse and Neglect services	3	2
Domestic Violence Services	2	0
Child Support Assistance	3	3
Health Education	224	79
Assistance to Families of Incarcerated Individuals	6	2
Parenting Education	433	120
Marriage Education	6	0
Received at Least One Family Service	446	125

improving school behavior

Our School-Based Mental Health (SBMH) Specialists provide individual and group prevention, case management, crisis management and staff consultation. Through one-on-one contact, group contact or staff consult, the overall goal of services is to reduce barriers to learning and improve academic functioning for students in Clermont County elementary, middle and high schools. These programs are funded primarily through the Clermont County Mental Health & Recovery Board.

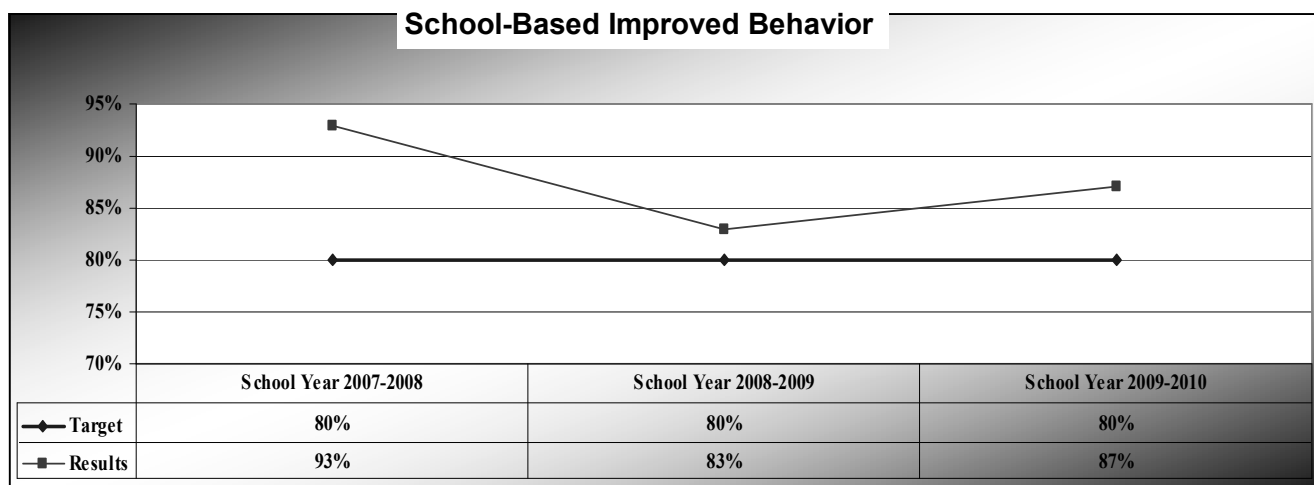
94% of respondents at [Genesis and Alternative School](#) think the School-Based Mental Health Services are unique and needed in the school and **95%** would recommend school-based services to other schools.

87% of the school staff surveyed indicated that they agreed or strongly agreed with the statement “The students who were served were more manageable in the classroom after starting [school-based mental health services](#).”

88% of students surveyed in [school-based mental health services](#) agreed with the statement, “I learned important coping skills that I have been able to use at home or school.”

93% of the students surveyed indicated that they agreed with the statement, “I would recommend [school-based mental health staff's services](#) to other students.”

97% of students reported progress or maintenance on individual [school-based mental health](#) goals.



stabilizing families

Child Focus provides mental health services that parents and caregivers report are helpful and informative, as well as provide meaningful information, such as how to implement treatment recommendations in the home and educational settings. These programs are funded primarily through the Clermont County Mental Health & Recovery Board.

82% of respondents whose child received only an **individual/family counseling** service reported improvement in their child's presenting symptoms.

93% of parents and guardians reported they were satisfied with the **case management** services.

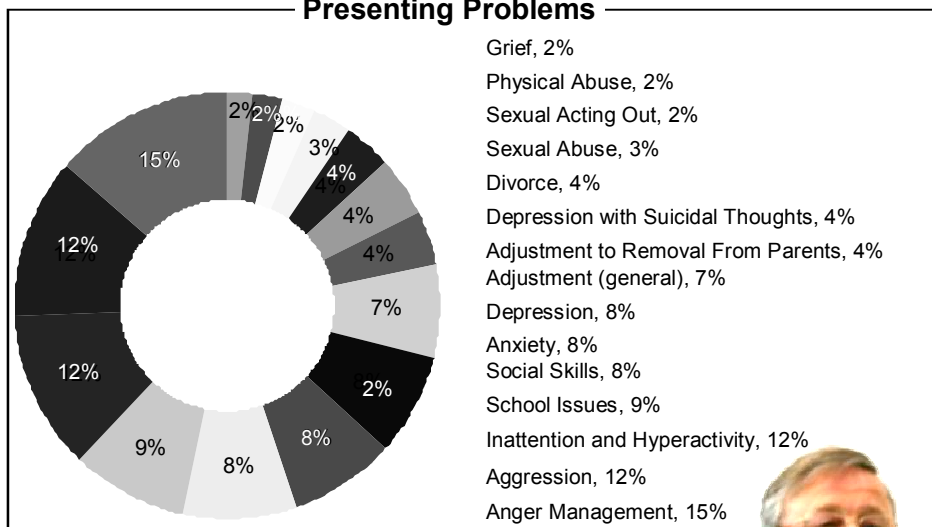
100% of clients who completed a **crisis intervention service** survey reported that the service a) helped them to manage the crisis *and* b) develop a useful plan.

100% of clients who received **juvenile court home-based services** report the services are helpful and effective.

99% of parents and caregivers report that their question or concern about their child was answered through the **diagnostic process**.

75% of **Wasserman Youth and Adolescent Center** parents report improvement in their child's presenting symptoms.

Presenting Problems



In recent years, Child Focus has served increasing numbers of children who display physically aggressive outbursts. In addition, more of these aggressive children are presenting at younger ages—often prior to Kindergarten.



providing safe, healthy homes

Child Focus, Inc. Foster Care Program services are designed for children birth to young adulthood who have documented histories of abuse, neglect or dependency, and require temporary placement outside of the biological home environment. Foster care provides children with a safe, supportive family alternative until family reunification is possible or until a permanent living arrangement is secured. Foster care is funded by the Ohio Department of Job and Family Services through local county contracts and Medicaid reimbursement.

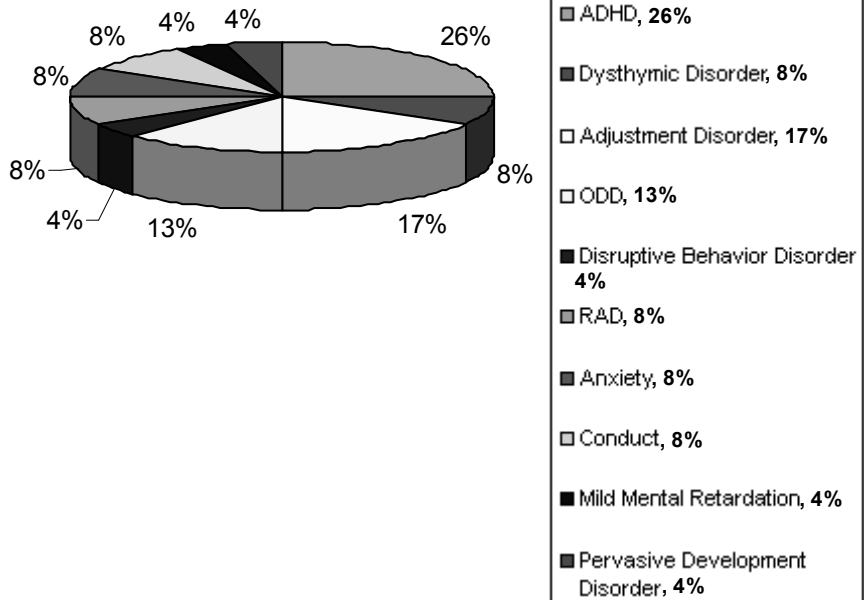
In **Foster Care**, 92% of foster children evidenced placement stability during their initial 12-month placement period.

School performance and school attendance records indicate that **100%** of school age **foster children** met school attendance policies and **85%** evidenced passing grades in **100%** of academic subjects.

As foster children near the age of emancipation it becomes paramount that they acquire the skills necessary for assuming adult roles and responsibilities. **89%** of foster children ages 15 and older acquired **self-sufficiency skills**, including job seeking and job maintenance skills.

100% of **foster children, foster parents and referral sources** reported satisfaction with the foster care placement. Foster children are surveyed semi-annually about their overall satisfaction with their family placement, safety of the foster home, access to privacy and place of religious worship, relationship with foster parents and staff and the quality and effectiveness of foster care services.

In 2010, 57 children received foster care services; **42%** were in **Specialized Foster Care** and presented with the following primary diagnosis:



preventing child abuse

Family Stability services use research-based child outcome targets as follows: 1) Reduce child abuse and neglect recidivism; 2) Improve caregiver response to children's developmental needs; 3) Improve basic family needs such as clothing, food, shelter, utilities, health care and mental health services; 4) Improve financial and economic potential and 5) Increase social supports for parents and children. Family Stability services are funded by Ohio Department of Job and Family Services, Clermont County Family & Children First Council, Ohio Children's Trust Fund, Greater Cincinnati Foundation, Clermont County Job and Family Services and Medicaid.

100% of families participating in [family stability services](#) evidenced increases in family and community resources including, 65% demonstrated an increase in age and developmentally appropriate toys, games and activities in the home, 42% implemented daily routines and structure in the home, 26% of parents increased social support and more than 40% evidenced improved utilization of health care and mental health services.

100% of parents who participated in [child abuse prevention services](#) (CAP) demonstrated improvement in one or more abusive parenting constructs as measured through pre and post testing on the Adolescent-Adult Parenting Inventory (AAPI). Improvements were noted in the following areas: age and developmentally appropriate expectations of children; empathy, decreased belief in the use of corporal punishment; parent-child role reversal and power and control over children.



servicing our community

The Child Focus Training Center provides on and off-site training for staff and community for a variety of disciplines including counselors, social workers, marriage and family therapists, psychologists, teachers and human resource development. Child Focus also partners with many agencies to provide staff and services to youth and support our community, with programs such as the Clermont County Crisis Hotline, Last Chance Driving Program, Crisis Response Team, Genesis Center and Olweus Bullying and School Violence Prevention. Community programs are funded primarily by the Clermont County Mental Health & Recovery Board/Clermont FAST TRAC, Clermont County Family and Children First Council and Clermont County Educational Services Center.

Thirty-six schools have been trained in the [Olweus Bullying Prevention program](#), an international, evidence-based school-wide bullying prevention program shown to **prevent and reduce bullying behavior from 30 to 70%**. The program attempts to restructure the existing school environment to reduce opportunities and rewards for bullying. School staff is largely responsible for introducing and implementing the program. Their efforts are directed toward improving peer relations and making the school a safe and positive place for students to learn and develop. The Olweus Bullying Prevention Program is also a model program for the Substance Abuse and Mental Health Services Administration, U.S. Department of Health and Human Services and Office of Juvenile Justice and Delinquency Prevention, U.S. Department of Justice. In less than two years, all public schools in Clermont County will have had the opportunity to implement the program either with school funding or Clermont County Family and Children First Council support.

[The Clermont County Crisis Hotline \(528-7283 or 528-SAVE\)](#) is a free and confidential hotline available 24-hours/ 7 days a week and provides suicide prevention, crisis intervention and referral information to Clermont County residents of all ages. New in 2010, the Clermont County Crisis Hotline Chat Service provides online support to individuals experiencing an emotional crisis. This service is not therapy, as it is a time-limited service that focuses on the current crisis at hand. The chat service is only available during specified times at www.528save.org.

committing to quality

CFI adheres to the accreditation standards of Step Up to Quality (SUTQ), Commission on Accreditation for Rehabilitation Facilities (CARF) and American Association of Suicidology (AAS.) These accreditation standards are based upon national research and quality benchmarks that lead to improved outcomes for children, families and adults.

Licensing and certifying bodies include Office of Head Start Performance Standards, Ohio Departments of Education, Mental Health, Alcohol and Drug Addiction Services and Job and Family Services. CFI is also audited annually by an independent auditor, currently Clark, Schaefer & Hackett. Funding sources include local, state and federal funds and private fees including Office of Head Start, Medicaid, child care vouchers, Temporary Aid for Needy Families, grants through the Ohio Departments of Education, Health, Mental Health, Job and Family Services, Clermont County Mental Health and Recovery Board, insurance, Health Foundation of Greater Cincinnati, Greater Cincinnati Foundation, Insuring The Children, United Way and contracts with the General Health District, Clermont County Sheriff, Educational Service Center, Juvenile Court, schools and childcare partners.

Recent agency recognition includes a nomination of Child Focus as a National Center of Excellence by the Governor of Ohio. The Centers of Excellence program recognizes Head Start and Early Head Start grantees that are performing at the highest levels of quality. Excellent and effective programs are those that have achieved and are actively building upon full compliance with the Program Performance Standards and are implementing comprehensive, innovative and targeted approaches to enhance program services. Child Focus also received the New Century Community Service Award by United Way of Greater Cincinnati and was nominated for the Clermont Chamber of Commerce 2011 Small Business Award for Customer Focus and Vision Award by United Way Eastern Area. Federal and state recognition has been received for our Head Start, Fatherhood Initiative, and literacy programs. The agency also received Exemplaries during the Head Start Federal Review for its monitoring systems and commitment to making data-driven decisions, maternal depression supports for new moms and for Child Focus' ability to leverage resources. In addition, Child Focus, Inc. was granted three-year CARF accreditation for outpatient, case management, day treatment, out of home care, and crisis intervention. Child Focus also received Exemplary ratings, CARF's highest commendation, for Wasserman Youth and Adolescent Center, crisis intervention, succession planning and the agency's financial management and planning.



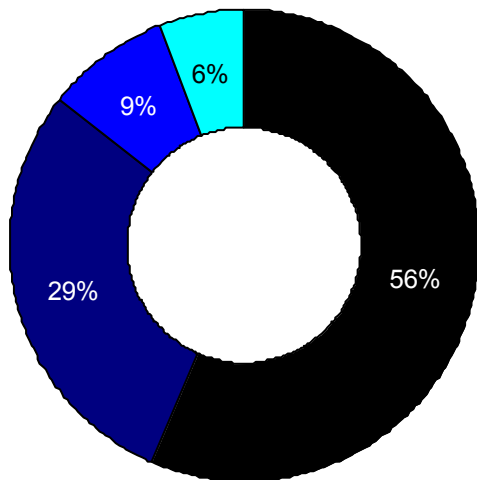
leveraging our dollar

The final audit report for Fiscal Year ending June 30, 2010 was conducted in accordance with auditing standards generally accepted in the United States of America, the standards applicable to financial audits contained the Government Auditing Standards, issued by the Controller General of the United States; and OMB Circular A-133. The audit did not contain any non-compliances, any questioned costs, any instances of non-compliance with any funding sources, or reveal any material weaknesses in the agency's internal control system.

Child Focus, Inc. Statement of Activities, Year End June 30, 2010

revenue fiscal year ending june 2010 (\$12,139,091)

\$6,831,827	federal
\$3,536,092	state
\$1,051,496	local
\$ 713,157	private



Support:

Federal Grant	3,410,404
State subsidy	1,734,886
Title XIX and other federal funds	2,115,745
School district contracts	311,832
Therapeutic Foster Care funds	884,701
Early Head Start	948,896
In Kind program revenue	321,528
United Way	278,069
Contributions	4,153

10,010,214

Revenue:

Day Care funds	488,447
Fees: Self Pay	64,103
Agency	248,135
Miscellaneous Income	171,906
Special events less expenses of \$6,519	5,291
Child/Adult Care Food Program reimbursement	208,870
Homebase intervention	260,902
Ohio Children's Trust Fund	53,258
Day Treatment	326,863
Interest Income	20,787
Training	98,957
Insurance Fees	118,198
Rental Income	52,866
Unrealized loss on investments	(331)
Gain on sale of property and equipment	4,106
Release from restrictions	

Total support and revenue 12,132,572

Expenses:

Program services	10,191,154
Management and general	1,823,658
Fundraising	7,714

Total Expenses 12,022,526

Change in net assets 110,046

Net assets, beginning of year 6,764,877

Net assets, end of year 6,874,923

joining with communities

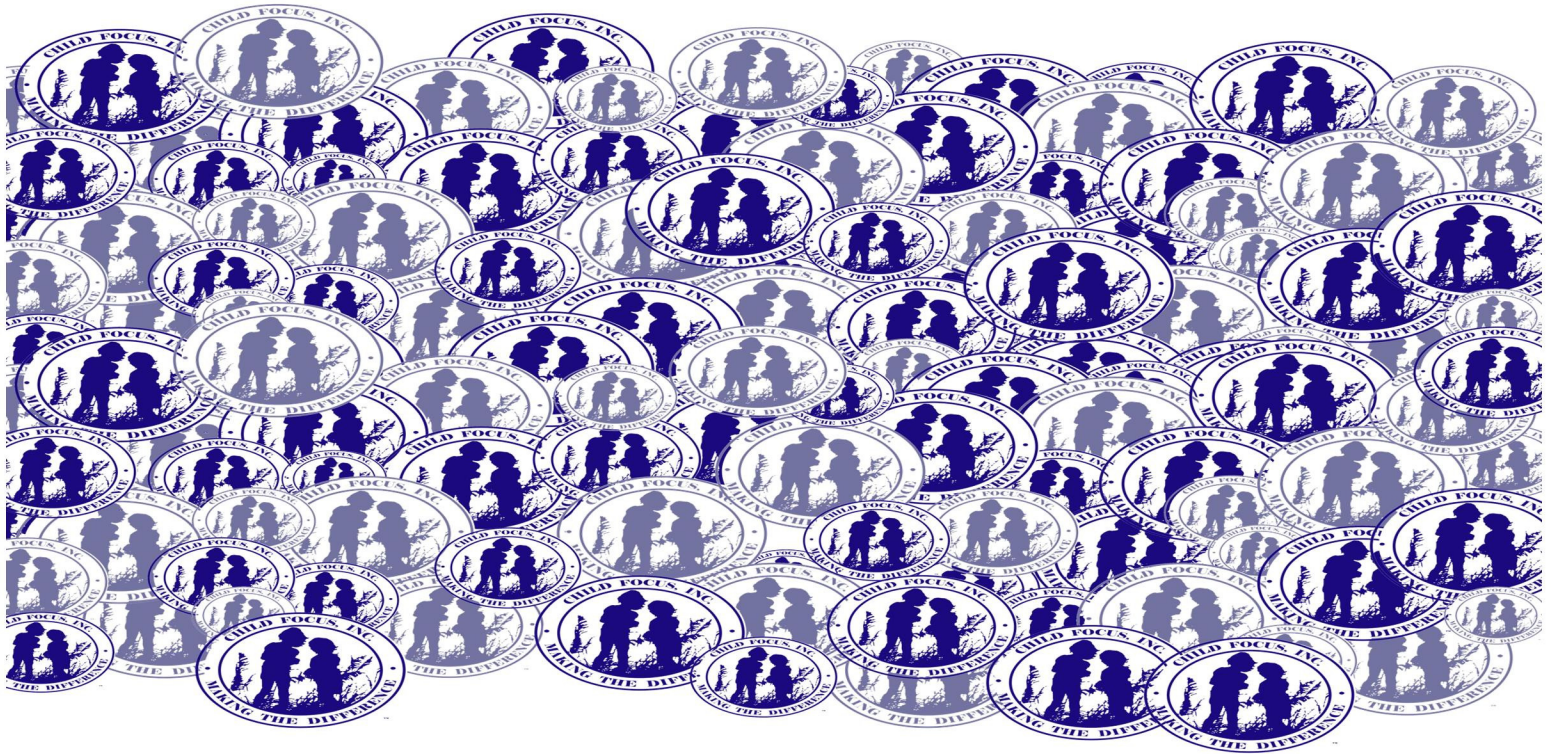
Child Focus, Inc. has an extensive history of positive collaborative relationships with community systems. Child Focus partners with several community organizations to serve children, youth and families through service provision, participation and leadership on community boards, planning committees and councils.

United Way provides funding for mental health screening, assessment and consultation to be provided in the preschool setting all enrolled children. Services are focused on the prevention and early intervention of emotional and behavioral problems in children. Child Focus is also funded for a **Two-Way Immersion (TWI) preschool**, an effective form of dual language education in which native English speakers and native speakers of Spanish are integrated for academic instruction through both English and Spanish in the preschool classroom. This program promotes bilingualism and biliteracy, academic achievement, and positive cross-cultural attitudes and behaviors in students. Programs for Spanish speaking families and Dual Language Learners are available in Home-Based for Early Head Start and Bilingual Home Base for Head Start children. Finally, Child Focus, Inc. is an active member of the Clermont County Success by 6 initiative to promote school readiness.

Clermont FAST TRAC is a system of care initiative of the Clermont County Mental Health & Recovery Board and is funded by a grant from the United States Department of Health and Human Services, Substance Abuse and Mental Health Services Administration. This initiative provides funding for Child Focus to provide **Community Trainings, Caregiver Depression, School-Based Mental Health and Early Childhood Mental Health services** in Clermont County. Since the initiative began in 2009, Child Focus has provided over \$11,000 of in-kind through planning and service-related meetings.

The PNC Bank Grow Up Great with Science is a collaboration between the **Cincinnati Nature Center, University of Cincinnati** and Child Focus Inc. In 2010 through this project funded by **PNC Bank Foundation**, Head Start teachers were mentored by naturalists from the Cincinnati Nature Center and learned how to facilitate more science and natural inquiry in their classrooms. In addition, staff were able to participate in online courses from UC to enhance their knowledge and foundation in science with preschoolers. The project included an outreach to parents with targeted training and family events as well as an annual membership. A beautiful butterfly garden was incorporated into the grounds at Child Focus with funding and volunteers from PNC Bank and a Head Start Body Smart grant.

Child Focus, Inc. is committed to supporting the oral health of young children in the Head Start and Early Head Start programs. Children in our programs learn to brush teeth early and tooth-brushing is incorporated daily after every meal. Parent education about the importance of regular dental exams as well as advocacy with local dentists is an important priority for our program. Child Focus, Inc. is involved in the **National Give Kids a Smile Day** event. In 2010, four local dentists ensured involvement in this national effort and provided professional dental services to 60 preschool age children.



the mission

of Child Focus, Inc.
is to join with communities
in strengthening families
and improving the quality of life
for children.



Child Focus, Inc.
Making THE Difference!
www.child-focus.org



Agency Partner